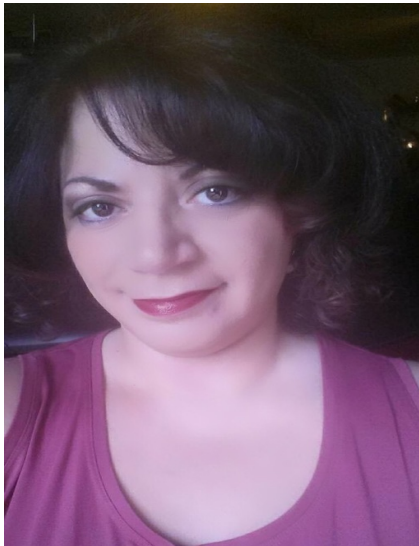
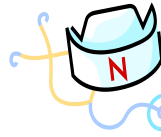


ABOUT US

Twogether Consulting has served as consultants to HCS, ICF & TXHL providers statewide (and nationally for ICF), assisting them in areas of personnel training, quality assurance, survey and audit preparation and recovery, assistance with plans of correction, development of policies and procedures, and more. We also assist providers in “start-up” of their program. We hold classes statewide for nurses, care coordinators, QIDP’s, program administrators, Quality Assurance staff, as well as “on-site only” classes for direct care. Most recently we have offered webinar training for many of our classes.



Julie Blacklock Owner/Consultant- is a graduate of Southwestern University, Julie began her career in the developmental disabilities field as direct care. She worked as a Service Coordinator at Austin Travis County MHMR. Julie also worked with various providers in the private sector in the Austin area as a QMRP for ICF, a Case Manager and Program Director for HCS providers. Julie was also an HCS provider herself. She has been an IDD/ Medicaid Waiver Consultant since 1997.



Nursing Services

Gina Carandas Peterson, RN-

Gina has over 25 years of experience working with persons with intellectual and developmental disabilities as well as the elderly population. Gina is one of our nursing class developers and presenters. She is available for on-site consultation and does a lot of our off-site assistance with CAP’s and POC’s of

Gina was a State Surveyor for Department of Aging and Disability Services (Geriatric Surveyor Team an HCSSA Surveyor) from 2008-2010. She is also an experienced Long-Term Care Nurse and was a Regional Director of Compliance for 6 Nursing Homes out in the community as well as an Acting Director of Nurses in Katy, Texas. Gina worked as a Director of Nurses and Home Care Consultant for Quality Nursing Care in Houston, TX for 10 years, Gina was a main nurse developer for the nursing education program for Kaplan University. In recent years, she has assisted Nursing Facilities and Home Health Agencies prepare for surveys and with development and implementation of Plans of Correction as well as providing nursing for a variety of HCS and ICF programs in the Houston area.

Gina is also available for RN Consultation to Nursing Facilities and Home Health Agencies as well. Gina is our Nursing Peer Review specialist as well and is available to participate in and/or facilitate provider peer reviews for nursing. She available to provide “off-site” services from anywhere, and “on-site” RN consultation primarily around Houston, Galveston, and surrounding areas. Gina does however, travel throughout the State of Texas.



New Services:

- Assistance With Nurse Peer Reviews
- ICF/IDD DIT’s “on-site” or via webinar
 - (Directive Inservice Trainings)
- Development of Policy & Procedures:
 - General & SPI/DUA
 - Medical/Nursing
 - Day Habilitation Programs
 - Employee Handbook/Training
- QA Monitoring & Training for
 - For Nursing Department



Twogether Consulting, Limited

HCS/ICF/TXHL Consultants

Our Mission since 2004:

To help you as HCS, ICF and TXHL providers build a more successful business while improving your quality of service delivery to the individuals in your program.



“Helping you help those you serve through better business!”

Phone: 512-294-8032
Email: javasbja@aol.com
www.twogetherconsulting.com



SERVICES



On-Site Services:

(receive a 10% discount for initial on-site visit!)

- Provide **hands-on training** to care coordinators, Q's, nurses, program administrators and quality assurance personnel
- Provide **quality assurance** by auditing charts and other records and providing written feedback regarding errors and/or omissions along with recommendations on how to make corrections
- Complete **LON increase packets** for submission to DADS *(including medical)*
- Assist in **preparing** for annual or return surveys and audits
- Assist with **plans of correction**
- Identify and propose solutions for **HCS billing errors and omissions**
- **Start-up:** Develop or refine policies and procedures, orientation packets and customized forms for new and existing providers, new provider applications
- Provide **resource information**

Off-Site Services

Services via email, telephone and fax, video conference/webinar:

- Hold **Q&A sessions** regarding rules, regulations and procedures as well as advice on handling specific, special situations
- **Review** annual/update IPP's, IP's, or staffings, as well as other records and provide recommendations.
- Assist with **creating outcomes/goals, objectives, strategies/methodology.**
- Develop or refine **policies and procedures**, new hire, **orientation packets** and customize forms
- Assist with **plans of correction**
- **Short Trainings Per Webinar**

Please Contact us at: keattscopy@gmail.com if you would like to receive our bi-monthly newsletter!!!

Go to the following page to see our calendar of events. <https://events.time.ly/anatx6f>

Twogether Consulting is proud to be a representative for **TaskMaster Pro!** TMP is a web-based cloud computing system designed specifically for managing Waiver and ICF programs. TaskMaster Pro was created by a fellow HCS/ICF provider-Larry Hill (Hill Resources) and his team. Via the internet, you will be able to access information and monitor activity from wherever you are and whenever you want. Now when regulatory changes occur or required forms are updated, TaskMaster Pro is updated, so it will never be obsolete. Now this user-friendly, integrated system is available to you.

Call Julie Blacklock at 512-294-8032 to Request a Taskmaster Pro Demo. Free!

Manage your program anytime and from anywhere in the world with TaskMaster Pro! This comprehensive, easy-to-use system has a Secure Communication Center, and **meets at least 85% of mandated SPI/DUA compliance needs.** This program is the perfect tool for helpful QA Reports to assist the Q's, CM's, PM's and QA's.

SE/EA/DH Specialist

(Supported Employment/Employment Assistance/Day Habilitation/YES Waiver Specialist)

Zernalyn "Lynn" Palmares/IDD Consultant

Lynn worked in California for 7 years doing a variety of jobs in social services for the IDD population. She worked mainly in **Vocational Rehabilitation, Supported Employment and Dual Diagnosis Recovery** in California and has worked in many of the same services in Texas.

She began working with IDD services in the state of Texas, as a QIDP for the ICF program. Lynn was also the DH Director for a provider of HCS/ICF services. Lynn is an expert at "staff retention".

For at least 15 years Lynn worked as case manager and later became an "interim" program director in the HCS & TXHTML programs. She is available to assist persons with developing their DH program: finding resources, developing policy and procedure, creating training for employees/staff and for the individuals in the program, assessing individuals for their needs and learning styles, so the staff can be more productive with the individual in meeting objectives.

Lynn has worked for the YES waiver for the past 2 years and is available for Q&A and assistance with the application process for becoming a YES waiver provider.

Provider Application Specialist

Kim Littlejohn/IDD Consultant

Kim has been a consultant at Twogether Consulting for over 6 years! She is a graduate of the University of Central Arkansas with a Bachelors of Science. She worked at Austin Travis County Integral Care (formally known as ATCHMHR) for over 20 years. She began her career in the early 80's as a speech pathologist at Travis State School. She has worked as a QMRP and a residential unit manager in the ICF program. She has also worked as a program director and program manager for HCS services for over 12 years. Most recently, Kim worked with Quality Assurance at Austin State Hospital.

Kimberly has a wealth of knowledge in IDD Waiver Services, and is currently our HCS/TxHmL application specialist. She also assists off-site with Q&A for those persons seeking to become an HCS/TxHmL provider. Kimberly can be contacted at: klittlejohn@gmail.com

ICF Specialist

Annette Holland/IDD Consultant

Annette is our newest consultant. She most recently retired as the Executive Director for Rescare in the Austin location, after 25 years. She is a graduate from Purdue University, with a Bachelors of Science in Occupational Education. You can read more about her on our "About Us" page of the website.

Annette will be assisting primarily with the ICF program: **DIT Trainings, Development of Policy and Procedure, as well as Plans of Corrections,** and staff training.

TWOGETHER CONSULTING

P.O. Box 90426
Austin, TX 78709
Phone: 512-294-8032
E-mail: javasbj@aol.com or
javasbj@gmail.com



Twogether Consulting